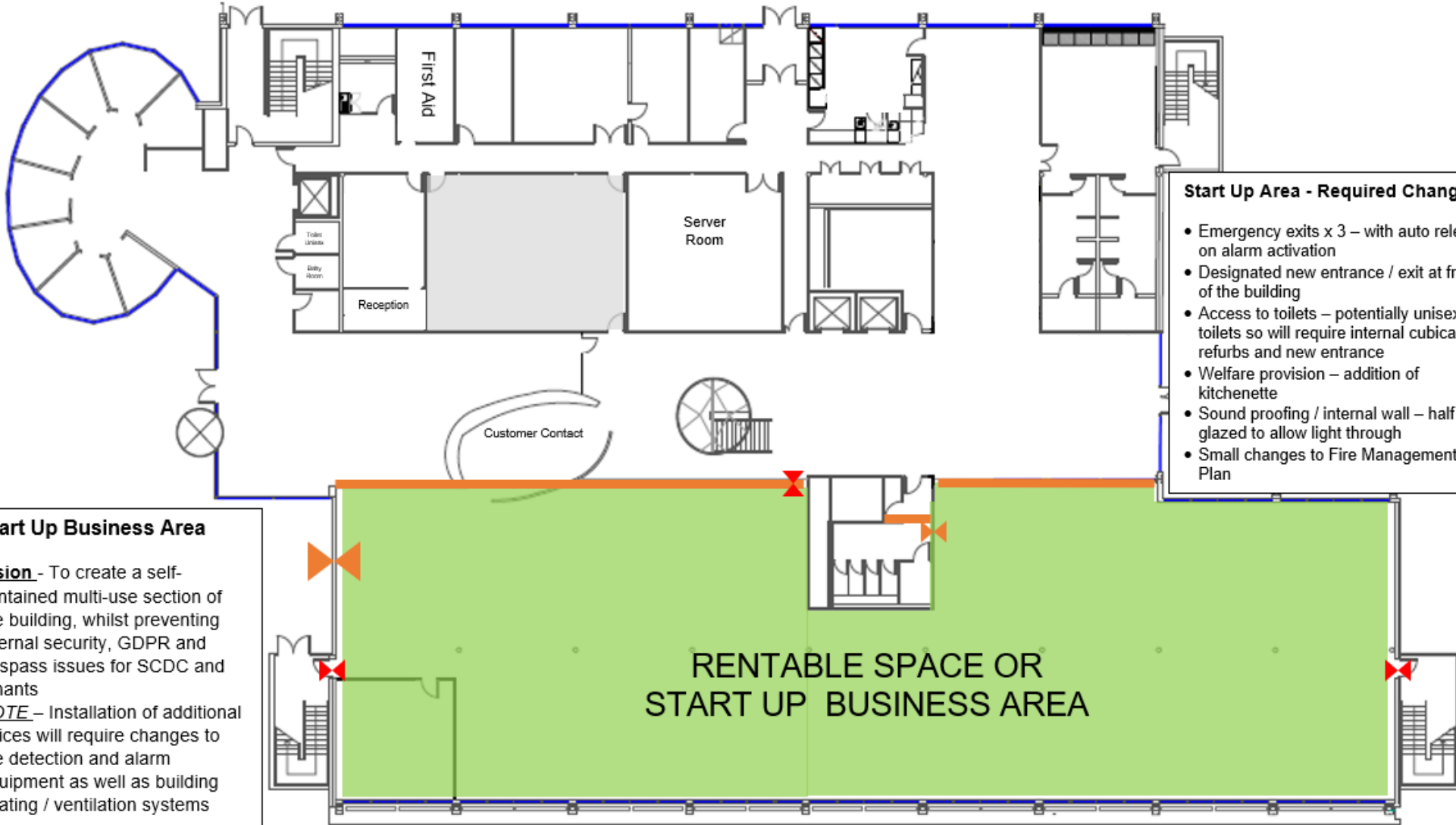


GROUND FLOOR



Start Up Business Area

Vision - To create a self-contained multi-use section of the building, whilst preventing internal security, GDPR and trespass issues for SCDC and tenants

NOTE - Installation of additional offices will require changes to fire detection and alarm equipment as well as building heating / ventilation systems

- Start Up Area - Required Changes**
- Emergency exits x 3 – with auto release on alarm activation
 - Designated new entrance / exit at front of the building
 - Access to toilets – potentially unisex toilets so will require internal cubical refurb and new entrance
 - Welfare provision – addition of kitchenette
 - Sound proofing / internal wall – half glazed to allow light through
 - Small changes to Fire Management Plan